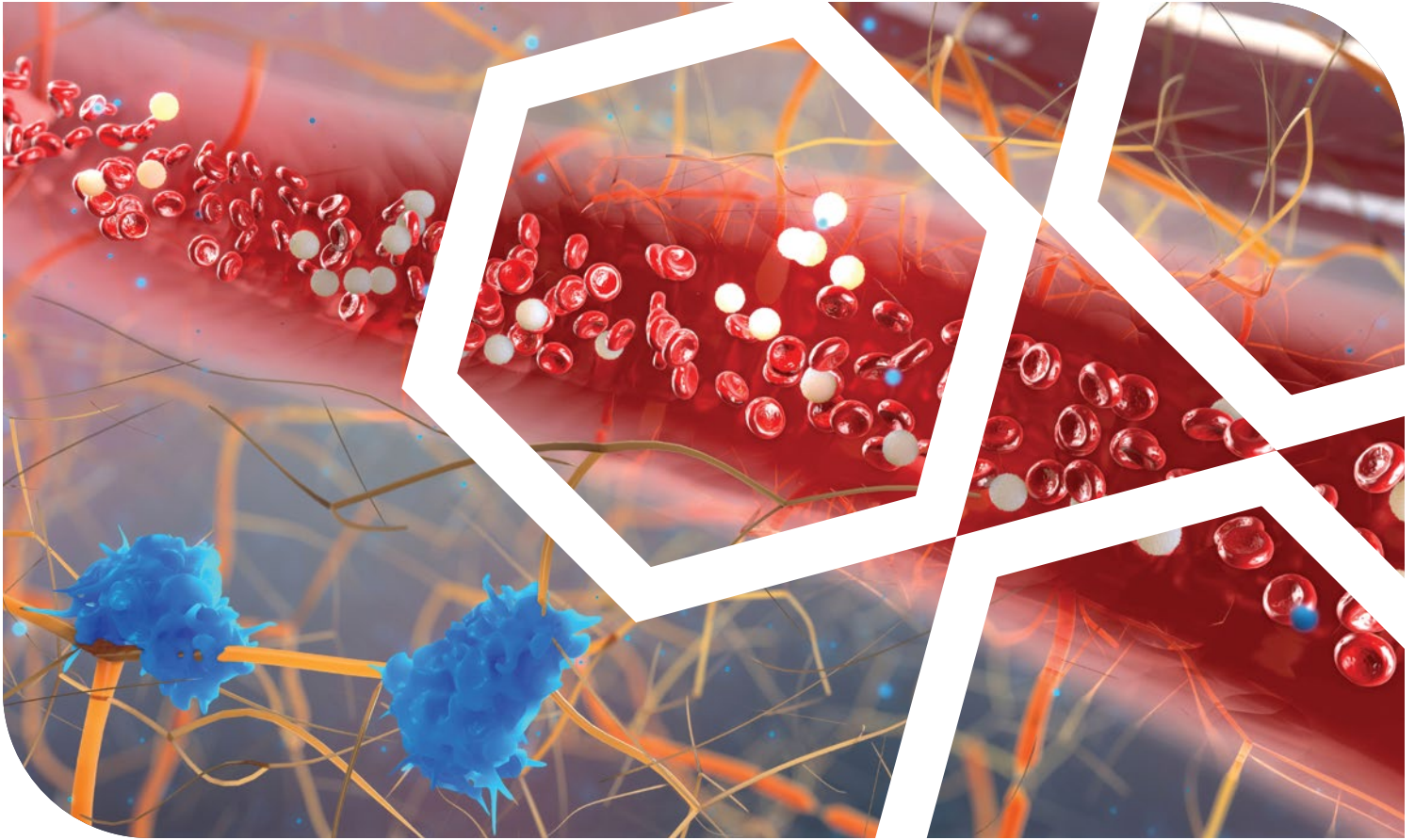


CASE STUDY

Blood Glucose INTEGRATION



Situation

Tandem Diabetes Care® was in need of a way to support more healthcare providers in delivering better and more accurate care to patients using newly available blood glucose meters. In order to do that, a custom **Application Programming Interface (API)** needed to be built to allow Tandem's software platform to connect to these meters.

Solution

In an effort to provide our customer with a tailored solution specific to their needs, Trendsic® purchased **Roche AccuChek Guide®** meters, created sample data by formulating and applying various concentrations of sugar water to blood glucose test strips, and then decoded those results. Through our expertise in custom hardware integrations and our gained knowledge of the intricacies of the **AccuCheck Guide®** meter, Trendsic® was able to successfully build a custom API.

Impact

The development of this API, along with the successful collaboration between Trendsic® and **Tandem Diabetes Care®**, allowed Tandem's software platform to not only support more meters, improving patient care through the development of technology, but also to stay competitive in the market by offering a broader range of products and services. The successful outcome of this project also demonstrates Trendsic's commitment to providing high-quality, comprehensive and effective solutions to their clients.

